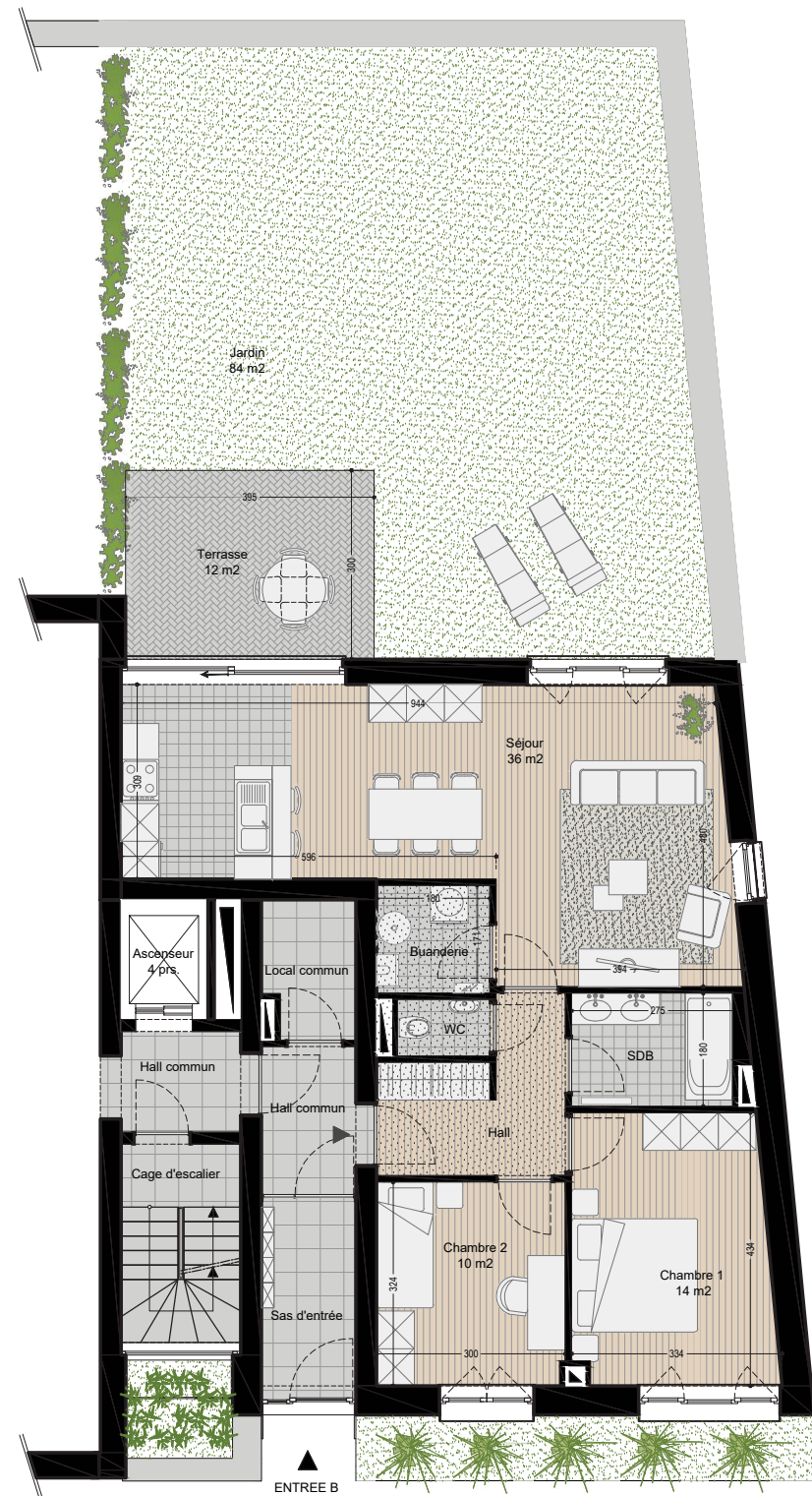
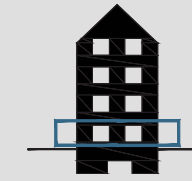


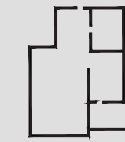
RESIDENCE LUXEMBOURG



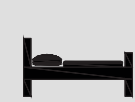
APPARTEMENT B.1



0/3



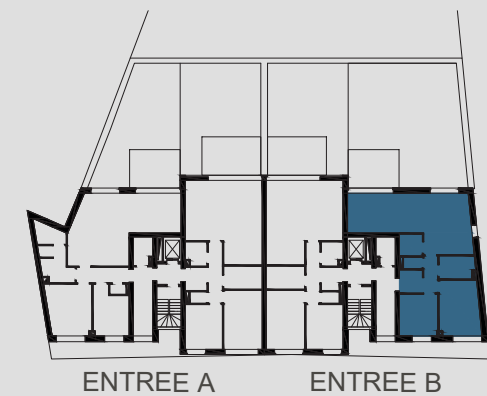
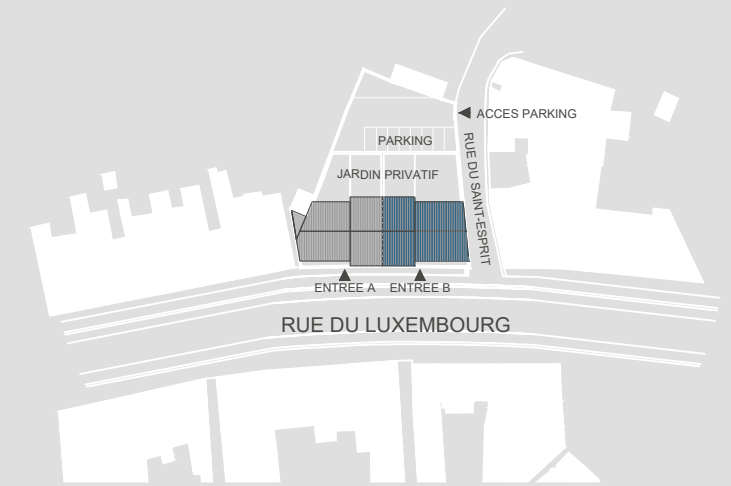
93 m²



2 Chambres



12 + 84 m²



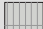




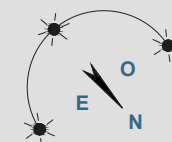
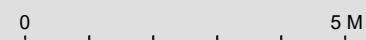
Architecte :



Promoteur :



-  Carrelage
-  Pavés béton
-  Balcon métallique
-  Faux-plafond
-  Sous-pente de toit



NOTE
 1. Ce plan est sujet à d'éventuelles modifications dues aux nécessités techniques de réalisation 2. Tout le mobilier est à titre illustratif et n'est donc pas fourni
 3. L'implantation et l'aménagement de la cuisine est à titre indicatif 4. Les côtes sont brutes sans parachèvement et à titre indicatif 5. Document non contractuel